

## Elevator Disaster Countermeasures - In Case of Power Failure -

For buildings with emergency power generator\*1

### Elevator Safety – What to Do in the Event of a Power Failure

It could be frightening if a power failure occurs while you're in the elevator. But do not worry--our elevators are equipped with disaster prevention features and services to keep you safe.

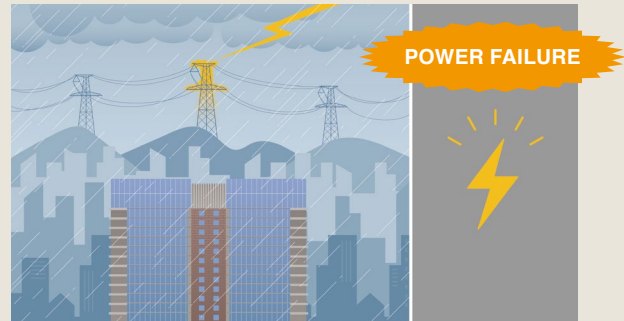
\*1 In buildings without an emergency power supply, a battery may be added to the elevator system. Please consult with a Mitsubishi Electric distributor for details.

#### A passenger in an office building is traveling up in the elevator.

The passenger is traveling from the 1st to the 20th floor.

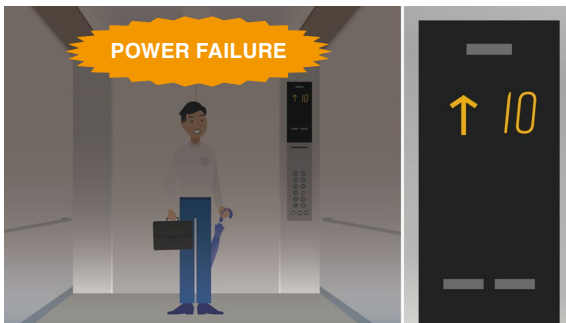


#### A power failure has occurred.



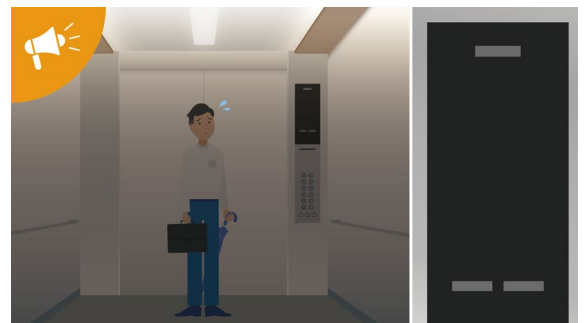
#### 1 The passenger immediately after a power failure.

The power has gone out, but please remain calm.



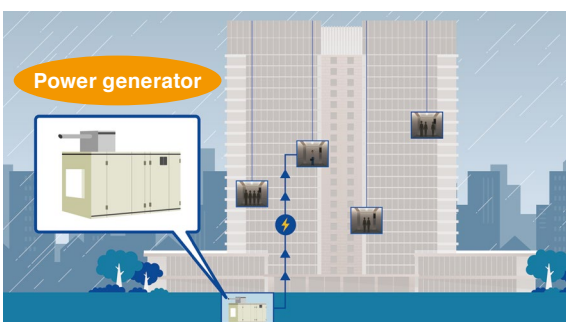
#### 2 An announcement is made 5 seconds later.

"Ding, Ding. Please wait a moment. x2"



#### 3 Power is supplied from an emergency power supply.

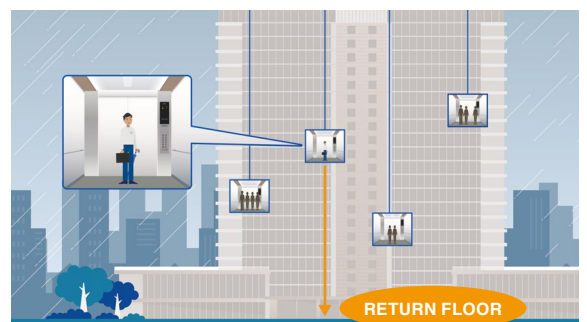
When the power supply to the elevator is disrupted in the event of an unexpected situation, the elevator is programmed to move to the pre-designated return floor.



\*The elevator can be set to perform the above operation automatically or manually depending on which mode is switched on.

#### 4 The elevators move to the return floor one at a time.

The elevators will move one at a time to take all passengers to the return floor safely, even with limited power.



\*The car lighting will be switched to normal mode after emergency power supplied.

5

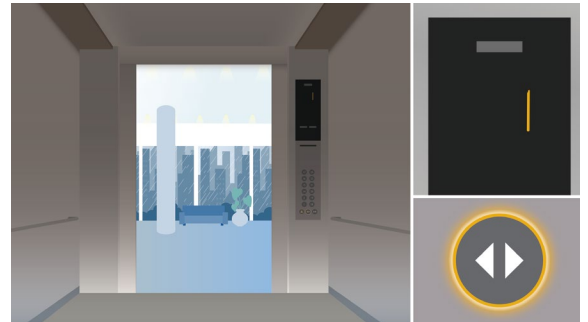
**The elevator reaches the evacuation floor, and the passenger evacuates.**

*"Ding, Ding, Power failure. Please exit when the doors open. x2"*  
An announcement will prompt passengers to promptly evacuate from the elevator.



6

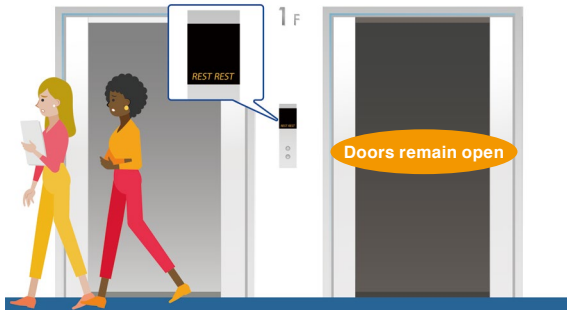
**The inside of the elevator after the passengers have evacuated.**



7

**The elevator landing after the passengers have evacuated.**

Once the elevator reaches the return floor, it will stay there with its doors open.



\*The REST indicator remains lit during fire emergency return operation, indicating that the elevator is out of service.

8

**The pre-designated elevator begins continuous operation.**

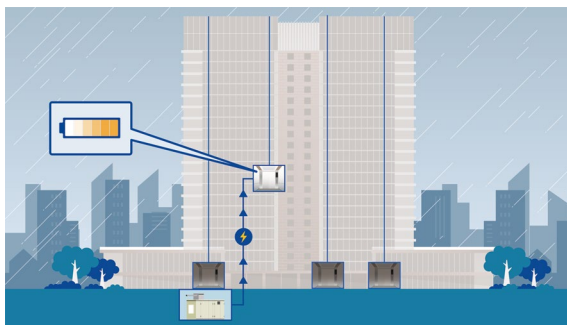
When all elevators reach the return floor, the pre-designated elevator will start continuous operation. It should be used to rescue and ensure the safe evacuation of anyone who is injured and unable to walk.



9

**The pre-designated elevator continues to operate.**

The pre-designated elevator will continue to operate until the power supply from the private power generator is exhausted.



Our elevators support passenger safety from the moment a Power Failure occurs until recovery is complete!



You can be prepared for disaster risks by strengthening building disaster prevention measures.

**Mitsubishi elevators help ensure passenger safety and peace of mind**

\*The above example situation shows typical specifications that are subject to change depending on applicable laws and requirements.

**MITSUBISHI ELECTRIC BUILDING SOLUTIONS CORPORATION**

HEAD OFFICE: TOKYO BLDG., 2-7-3, MARUNOUCHI, CHIYODA-KU, TOKYO 100-8310, JAPAN